

## Engineering Services



- New Construction
- Switches
- Retarders
- Panel Placement
- Bridge Services
- Earthwork Services
- Utility Installs
- Drainage
- Aggregate
- Pile Driving

## Training Facility



- On Site Training Facility
- CPR Training
- First Responder Training
- MSHA
- E-Rail Safe
- CFR 1910.120 HazMat



Est. 1926

**24/7 Emergency Service**  
**888-393-8808**

## **Diversified Railroad Services**

### Locations

#### **Minnesota**

13915 Lake Drive  
Forest Lake, MN 55025  
651-633-2221

#### **Wisconsin**

2644 61st Ave  
Osceola, WI 54020  
715-755-3355

#### **Wisconsin Quarry**

681 267th Street  
Osceola, WI 54020

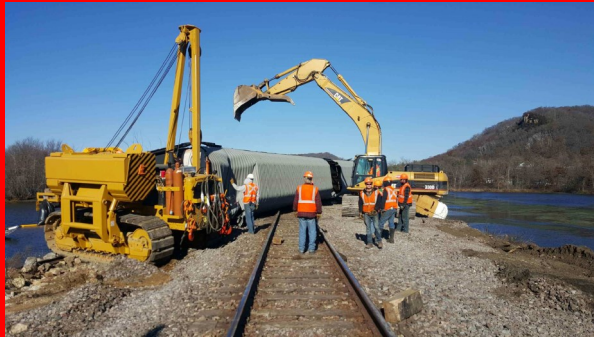
### Emergency Contacts

Dave Rybak 612-366-4864

Kent Decker 612-910-4997

Matt Bork 651-338-5334

## Emergency Services



- Service Interruption
- Derailments
- Washouts
- Snow Removal
- Spills
- Floods
- Frozen Ballast Auger

## Hi-Rail Services



- Hi-Rail Excavators
- Hi-Rail Rotary Dumps
- Hi-Rail Grapple/Boom Trucks
- Hi-Rail Hydroseeding

## Transfer Services



- Tie Downs
- Load Adjusts
- Load Reductions
- Unload / Reloads